

PROSPECTIVE TASK IV

Worksheet



RETTORE
REMEMBER TO REMEMBER



Co-funded by
the European Union

ASSIGNMENT OF PROSPECTIVE TASK IV

GROCERY SHOP – HOME – AMUSEMENT PARK

Note for the administrator

The administrator has the **Prospective Task IV. Assignment** ready (the child sheet, the Map, the game piece, and the worksheets Grocery shop, Home, Amusement park).

- The administrator presents the child with the **Assignment of Prospective Task IV** (child sheet).
- The child reads the assignment and the administrator checks whether the child understands it.
- The administrator assigns various background tasks to the child (using the Training of Executive functions worksheets).
- Then the child begins doing one of the tasks assigned by the administrator from the Training of Executive functions worksheets.
- At any point, the administrator clearly pronounces the word sky to the child - the call to do **task 1 Grocery shop**.
- (The child positions the game piece on a designated place on the map and selects the correct images from the worksheet **Grocery shop**.)
- The child returns to the tasks in the background (the Training of Executive functions worksheets).
- At any time, the administrator asks the child to begin **task 2 Home** in **five minutes**.
- (The child positions the game piece on a designated place on the map and selects the correct image from the worksheet **Home**.)
- The child returns to the tasks in the background (the Training of executive functions worksheets).
- The administrator shows the **rainbow** to the child - the call to do **task 3 Amusement park**.
- (The child positions the game piece on a designated place on the map and selects the correct image from the worksheet Amusement park.)
- The child returns to the tasks in the background (the Training of Executive functions worksheets).

Note:

In the case of an event-based cue, the child begins to do the task after being presented with the image by the administrator.

In the case of a time-based task, the child observes the time and begins doing the task at the time specified in the assignment.

ASSIGNMENT OF PROSPECTIVE TASK IV

GROCERY SHOP – HOME – AMUSEMENT PARK

Assignment for the child:

Finally, after an exhausting week, it is Friday. You and your friends decided to go to an amusement park. However, your parents have given you some things to do. First, you need to go to a grocery shop to buy apples, chocolate, toast bread and cheese, all the things your mum asked for. You also add a bottle of Fanta. **You begin doing the task once the administrator says sky.**

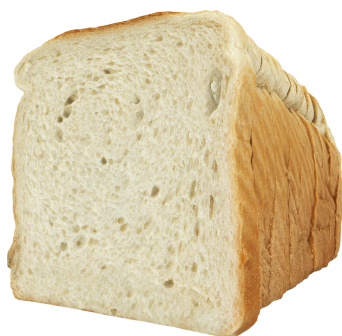
You rush home with your shopping to take care of your pet - your cat is starving! You are hungry as well. You found some ham in the fridge and the bread and cheese you bought so you make yourself a sandwich. **You start your house jobs based on the time instructions the administrator gives you.**

Once you finish eating, you head to the Amusement park. Last time, you had a great time on go-carts and at a 3D cinema. This time you want to try out a laser shooting range and darts. **You begin the task once the rainbow appears.**

PROSPECTIVE TASK IV
TASKS

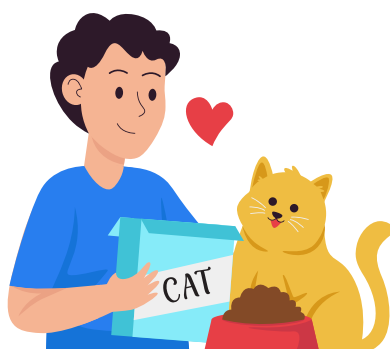
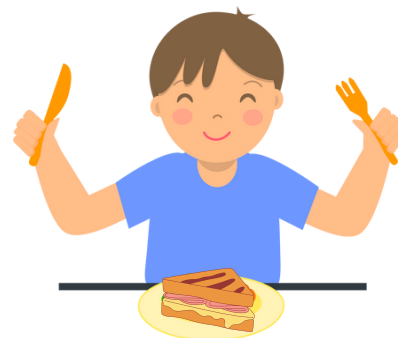
Worksheet 4

GROCERY SHOP



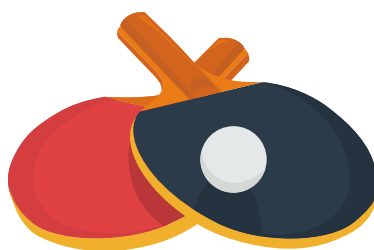
Worksheet 4

HOME



Worksheet 3

AMUSEMENT PARK



Map



Funded by the European Union.

Views and opinions expressed are however those of the author(s) only
and do not necessarily reflect those of the European Union
or the European Education and Culture Executive Agency (EACEA).
Neither the European Union nor EACEA can be held responsible for them.



RETTORE
REMEMBER TO REMEMBER



Co-funded by
the European Union